

NATIONAL TEXTILE ASSOCIATION

**150TH Annual Meeting
September 19-21, 2004**

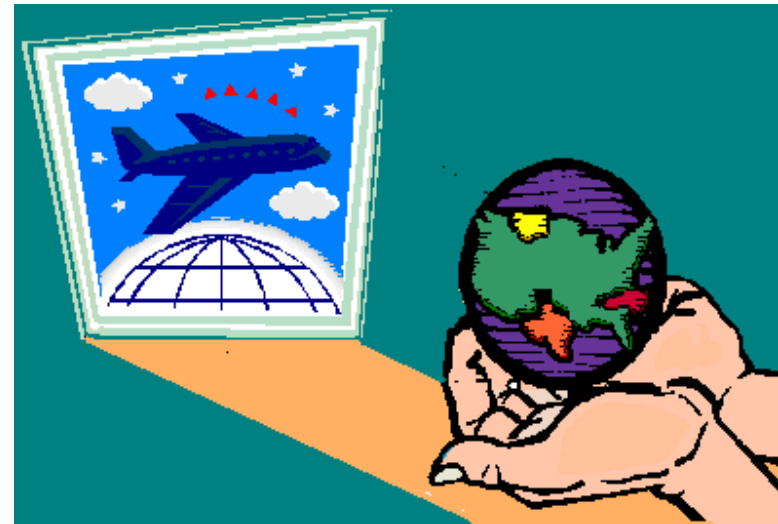
Cooperstown, New York



NATIONAL TEXTILE ASSOCIATION

149TH Annual Meeting

Free Trade For US



**November 9-11, 2003
Ponte Vedra, Florida**

NATIONAL TEXTILE ASSOCIATION

6 Beacon St., Ste. 1125
Boston, MA 02108
www.nationaltextile.org

**November 9-11, 2003
Ponte Vedra, Florida**

2004 CALENDAR

Jan. 14-17..... Heimtextil, Frankfurt Germany
Jan. 16-18..... Imprinted Sportswear Show, Long Beach CA
Jan. 19..... Martin Luther King, Jr. Day
Jan. 29-31..... INDA Annual Mtg, St Petersburg FL
Jan. 30-Feb. 2..... Outdoor Retailer Show, Salt Lake City
Feb. 16..... Presidents' Day
Feb. 19-21..... Imprinted Sportswear Show, Tampa FL
Feb. 23-26..... Magic Show, Las Vegas
Feb. 25-28..... Premiere Vision, France
March TBD..... Int'l Fashion Fabric Expo, NYC
March 11-13..... Imprinted Sportswear Show, Atlantic City NJ
March 30-April 1..... Techtextil North America, Atlanta GA
April 11..... Easter
April 22-28..... Furniture Market, High Point NC
April 27-29..... IDEA04 Intl Engineered Fabrics Conf & Expo, Miami FL
April 29-May 1..... Imprinted Sportswear Show, Columbus OH
May 5-7..... Apparel Sourcing Show, Guatemala
May 13..... CCFMI Annual Mtg, Italy
May 18-20..... Material World, Miami Beach FL
May 19-20..... Auto Interiors Show, Detroit MI
May 26-27..... ITT Biennial Mtg
May 31..... Memorial Day
June 14-16..... NeoCon, Chicago IL
Aug. 12-15..... Outdoor Retailer Mkt, Salt Lake City
Sept. 4-6..... Mode City and Interfilere, Lyon France
Sept. 6..... Labor Day
Sept. 10-12..... Imprinted Sportswear Show, Dallas TX
Sept. 11-14..... Decosit, Belgium
Sept. 13-17..... ATME-I, Greenville SC
Sept. 16..... Rosh Hashanah
Sept. 19-21..... NTA Annual Mtg
Sept. 21-24..... Premiere Vision, France
Sept. 25..... Yom Kippur
Oct. TBA..... Int'l Fashion Fabric Expo, NYC
Oct. 14-20..... Furniture Market, High Point NC
Oct. 21-23..... Imprinted Sportswear Show, Atlanta GA
Oct. 26-27..... 4th Int'l Conf. of Safety & Protective Fabrics
Oct. 27-28..... ITT Biennial Mtg
Oct. 27-29..... IFAI Expo 2004, Pittsburgh PA
Nov. 25..... Thanksgiving Day
Dec. 20..... Samuel Slater Day

**National Textile Association
149th Annual Meeting**

PATRONS

Ames Textile Corporation
Invista (formerly DuPont)
Nylstar North America
O'Mara Incorporated
RadiciSpandex Corporation
Roman Knit, Inc.
Tweave, Inc.
Unifi, Inc.

DONORS

Davison Publishing Co., Inc.
Jassin~O'Rourke Group
Monarch Knitting Machinery Co.

SPONSORS

American Textile History Museum
Cheraw Yarn Mills, Inc.
Easthampton Dye Works, Inc.
Organic Dyestuffs Corporation

**November 9-11, 2003
Ponte Vedra, Florida**

SUNDAY

Registration, Reception, and Dinner

- 12:00 p.m. **Registration** Conference Center Lobby
- 3:00 p.m. **NTA Board Meeting** Ballroom 2
 Invitees Only Please
 Presiding: **WILLIAM GIBLIN**,
 NTA Chairman; President, Tweave, Inc.
- 6:00 p.m. **Welcoming Cocktail Reception**..... Conf. Center Lobby
 Hosted by NTA Associate & Supporting Members
- 7:00 p.m. **Dinner & Dancing** Ballroom 1
 Presentation by the American Textile History Museum

MONDAY

Morning Program

- 7:00–9:00 a.m. **Breakfast Buffet**..... Mural Room
- 7:30-8:45 a.m. **Council Meetings**
- Knitters and Finishers Group Meeting** Tarpon Room
 Presiding: **JAMES ROBBINS**, President,
 Elastic Fabrics of America
- OR*
- Wool Manufacturers Council Mtg**..... Sand Dollar
 Presiding: **MERRITT LORING**, The Forstmann Company

**National Textile Association
149th Annual Meeting**

SPEAKERS

Neil Trautwein

Neil Trautwein is the National Association of Manufacturers' health care lobbyist and has primary responsibility for health care policy. Trautwein, director of employment policy for the NAM since 1998, is also a frequent spokesman to the media and general public. Recent health care issues of concern for the NAM include private market health insurance coverage for the uninsured, Medicare reform and prescription drugs, medical liability reform, the Patients' Bill of Rights, trade act adjustment assistance, genetic discrimination, health care, antitrust and health insurance mandates.

Prior to joining the NAM, Trautwein served as manager of health care policy for the U.S. Chamber of Commerce from 1995-1998. Trautwein previously served as director of governmental affairs for the National Association of Health Underwriters from 1991-1995 and legislative assistant for Senator Mitch McConnell (R-KY) from 1985-1991.

Trautwein received his Bachelor of Arts degree in political science from the University of Louisville and his Juris Doctor degree from George Washington University's National Law Center.

The National Association of Manufacturers is the nation's largest industrial trade association representing 14,000 members (including 10,000 small and mid-sized companies) and their employees in every industrial sector and all 50 states. Headquartered in Washington, D.C., the NAM has 10 additional offices across the country.

Bonnie Brook

Bonnie Brook, co-founder of Stephenson & Brook, is credited with having directed the national growth and expansion of Stephenson & Brook. She personally consults to senior corporate management throughout the United States on issues concerning loss management, workers' compensation fraud, and the impact of workers' compensation liabilities on corporate mergers and acquisitions. Ms. Brook speaks frequently to national business associations and she is a member of the Fraud Commission of the National Council on Compensation Insurance as well as the Workers' Compensation Task Force of the Attorney General of the Commonwealth of Massachusetts. Ms. Brook has extensive corporate experience in industrial and employee relations and she holds a Masters Degree in Labor Relations from New York University.

**November 9-11, 2003
Ponte Vedra, Florida**

SPEAKERS

Wilbur L. Ross

Wilbur Ross may be the best known turnaround financier in the U.S., having been involved in the restructuring of over \$200 billion of defaulted companies' assets around the world. In 1998, Fortune Magazine called him "the King of Bankruptcy."

For the 26 years preceding March 2000, Mr. Ross was Executive Managing Director of Rothschild Inc., the U.S. affiliate of the Rothschild family's merchant banking group. Then he purchased the firm's distressed investment activities on April 1, 2000, formed WL Ross & Co. LLC and opened offices in New York City, Tokyo and Seoul.

In November 2003, a Ross-managed partnership with Mohawk Industries will acquire Burlington Industries for \$614 million. The partnership became Burlington's largest creditor after its bankruptcy filing at the end of 2001. WL Ross is also the major creditor of Cone Mills and was a major beneficiary of the acquisition of Fruit of the Loom by Berkshire Hathaway. Most recently the firm became the largest creditor of 360networks, an optical fiber long distance network, helped 360 acquire Group Telecom while both were in bankruptcy and subsequently helped it to acquire Dynegy Telecom. 360 also has contracted to acquire Touch America within the next months. Finally, the WL Ross funds are the largest convertible debt holders of Penn Treaty American Corp., a turnaround situation in the longterm care insurance industry.

Mr. Ross organized International Steel Group in April 2002 to acquire LTV Corp.'s assets and is now its board chairman. Later in 2002, ISG acquired the steelmaking assets of Acme Steel Corp. and in April 2003, it arranged a \$1 billion borrowing and acquired bankrupt Bethlehem Steel Corp. to become the nation's largest integrated steel producer. In August 2003, ISG filed with the SEC for a \$250 million initial public primary offering of stock. The offering is expected to become effective in October and is co-lead managed by Goldman Sachs and UBS.

Buyouts awarded WL Ross & Co. LLC the 2002 Public-to-Private Deal of the Year award as well as the Middle-Market Deal of the Year award for its acquisition of LTV Corporation and *The Mergers & Acquisitions Advisor* awarded WL Ross & Co. LLC the Boutique Middle Market Private Equity Firm of the Year 2002 Award.

Mr. Ross holds an A.B. from Yale University and an M.B.A., with Distinction, from Harvard University.

**National Textile Association
149th Annual Meeting**

MONDAY (Cont.)

Annual Business Meeting

9:00 a.m. **Speaking Program and Business Mtg** Ballroom 2
Presiding: **WILLIAM GIBLIN**

Free Trade for US

THE HON. DON EVANS

U.S. Secretary of Commerce

WILBUR L. ROSS

WL Ross and Co. LLC

Social Activities

11:30 a.m. **Lunch** Pro Shop
If you are going on the tour or are golfing, you will be given a box lunch.

12:00 m. **Golf Tournament**
Golfers will find box lunches waiting at their carts

11:45 p.m. **Tour**
With box lunch on bus.

12:30 p.m. **Tennis Tournament**
Tennis players should lunch in the Pro Shop

**November 9-11, 2003
Ponte Vedra, Florida**

MONDAY (Cont.)

Evening Program

- 6:00 p.m. **Cocktail Reception** Terrace
Shoot for the Pin competition will be at 6:30 p.m. at the West Putting Green during the cocktail reception
- 7:00 p.m. **Awards Dinner** Terrace
Casual attire is appropriate for the **Monday Dinner**

TUESDAY

Morning Program

- 7:00 a.m. **Breakfast Buffet**..... Mural Room
- 8:00 a.m. Panel Discussion:..... Ballroom 2
Healthcare Cost and Workers' Comp
Panelists: **BONNIE BROOK**, Stephenson & Brook; and **NEIL TRAUTWEIN**, National Association of Manufacturers.
Moderated by **SKIP GEHRING**, Gehring Textiles Inc. and **JOHN CHOPAK**, Easthampton Dye Works.
- 9:15 a.m. **Coffee Break**
- 9:30 a.m. Members Roundtable Discussion: Ballroom 2
What will "Free Trade for US" Mean for You?
Moderated by **JONATHAN STEVENS**, Ames Textile Corporation.
- 11:00 a.m. **Checkout**
- 12:00 m. **Lunch and Evaluations**

**National Textile Association
149th Annual Meeting**

SPEAKERS

The Honorable Don Evans

Don Evans is the 34th Secretary to lead the U.S. Department of Commerce, the voice of business in government. He oversees a diverse cabinet agency of 40,000 workers and a \$5 billion budget focused on promoting and advocating for American business, both at home and abroad. He is a key member of President Bush's economic team, advising the President on many issues, including trade, business concerns, energy policy and overall U.S. economic policy.

A former businessman in the oil and gas industry, Secretary Evans believes very strongly in the free enterprise system and corporate accountability. He sees his main mission in government as working to create a climate in which the U.S. and global economies can grow. "President Bush and I share the belief that governments don't create wealth and prosperity--people do. It is government's role to create the right conditions for America's workers and businesses to flourish," Evans says.

Secretary Evans was sworn into office on January 20, 2001. Born in Houston, Texas, in 1946, Secretary Evans attended the University of Texas at Austin, receiving a B.S. degree in Mechanical Engineering in 1969 and an M.B.A. in 1973. In December 2001, Secretary Evans was awarded an honorary Doctor of Humane Letters degree from the University of South Carolina. In September 2002, he was awarded a Distinguished Alumnus Award from the University of Texas. In November 2002, he was inducted into the University of Texas Red McCombs School of Business Hall of Fame. In April 2003, he was presented with the Jesse H. And Mary Gibbs Jones International Citizen of the Year award by the Houston World Affairs Council.

In 1975, Secretary Evans moved to Midland, Texas, from Houston and was a "roughneck" on an oil rig for Tom Brown, Inc, a large independent energy company. Ten years later, he took the helm of the company as CEO and continued leading it until he was tapped by the President to lead the Commerce Department.

Secretary Evans has made significant contributions in local and national politics over the past 25 years, having worked on behalf of Governor Bush's successful gubernatorial campaigns in 1994 and 1998, and serving as Chairman of the Bush/Cheney 2000 campaign. Secretary Evans says his passions in life are family and his friends. He is married to Susan Marinis Evans. They have two daughters, a son and a granddaughter.